



# “Mega Boy” Inlet Filters

Large Airflows in a Single Barrel Filter Design  
18” to 24” Flg, 5500 - 8000 SCFM

## APPLICATIONS & EQUIPMENT

- ♦ Industrial & Severe Duty
- ♦ Centralized Air Intakes
- ♦ Centrifugal Blowers
- ♦ Piston Compressors
- ♦ Screw Compressors
- ♦ Centrifugal Compressors
- ♦ Fans
- ♦ Food Industry
- ♦ Pneumatic Conveying
- ♦ Factory Air
- ♦ Waste Water Aeration
- ♦ Cement
- ♦ Power Plants

## FEATURES & SPECIFICATIONS

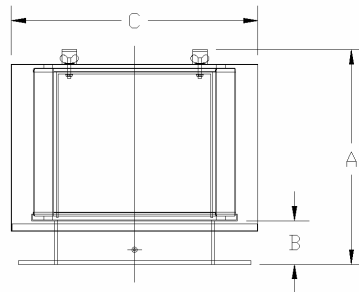
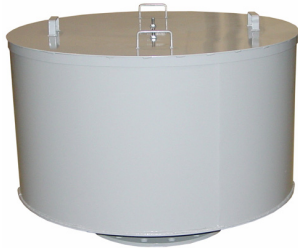
- ♦ Single barrel filter design for space restricted work areas while still handling large air flows.
- ♦ Lower pressure drop is achieved with single barrel design
- ♦ Durable carbon steel construction with baked enamel gray finish
- ♦ Multiple flange connections available
- ♦ FS Series Models: Tubular silencing design is positioned to maximize attenuation and air flow while minimizing pressure drop
- ♦ Temp (continuous): min -26°C (-15°F) max 104°C (220°F)
- ♦ Filter change out differential: 255-380 mm H<sub>2</sub>O over initial delta P

## OPTIONS (Inquiries Encouraged)

- ♦ 1/8” tap holes
- ♦ Pressure Drop Indicator
- ♦ Available in **Stainless Steel**
- ♦ Epoxy coated housings
- ♦ Various media
- ♦ FS, F, FT, MBF series styles

## CONFIGURATIONS

## DRAWING



with Polyester Element	with Paper Element	Flg Outlet	Reference Only Dimensions - inches			Rated Flow SCFM
			A	B	C	
F-391-1800F	F-390-1800F	18"	23 1/2	6	36	5500
F-491-1800F	F-490-1800F	18"	30 1/2	6	36	8000
F-491-2000F	F-490-2000F	20"	30 1/2	6	36	8000
F-491-2400F	F-491-2400F	24"	30 1/2	6	36	8000

Contact factory for other sizes, flows and for Filter Silencer configurations

SPECIALS

